



Better Homes! Better Prices!



BRADFORD

4 Bed, 2.5 bath
2372 sq. ft.



IT FEATURES

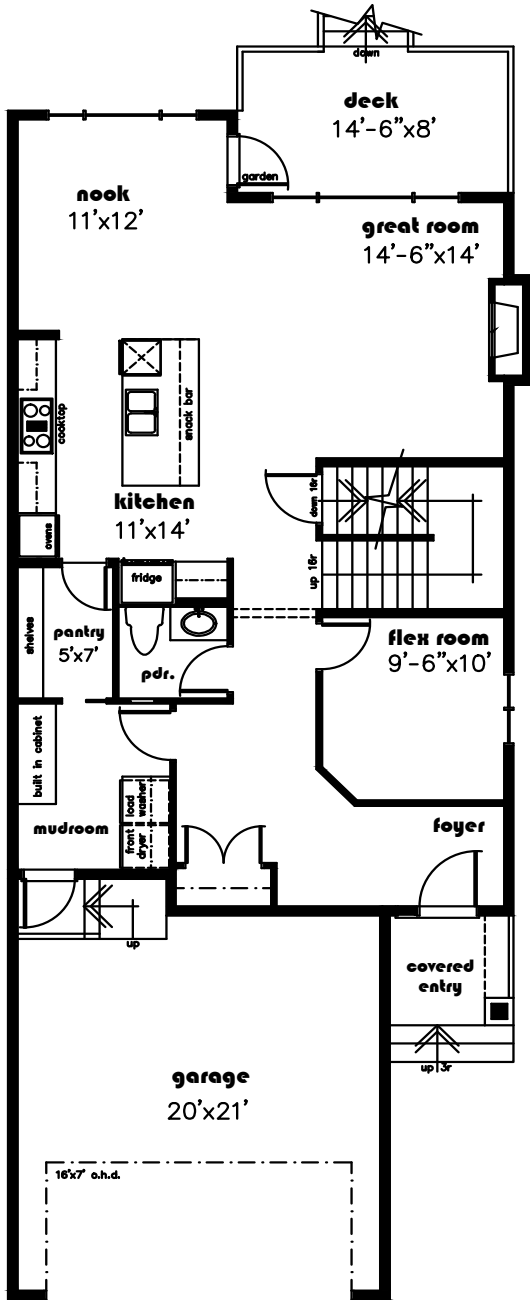
- Spacious entrance
- Main floor den/flex room
- Walk through pantry
- Kitchen is chef's dream with large island and lots of cabinets
- Luxurious master suite with huge walk in closet
- large bonus room
- 9 ft. main & basement ceiling
- Main floor laundry, spacious mud room
- Pressure treated rear deck with gas line for BBQ

www.blackstonehomes.ca
780-298-2100

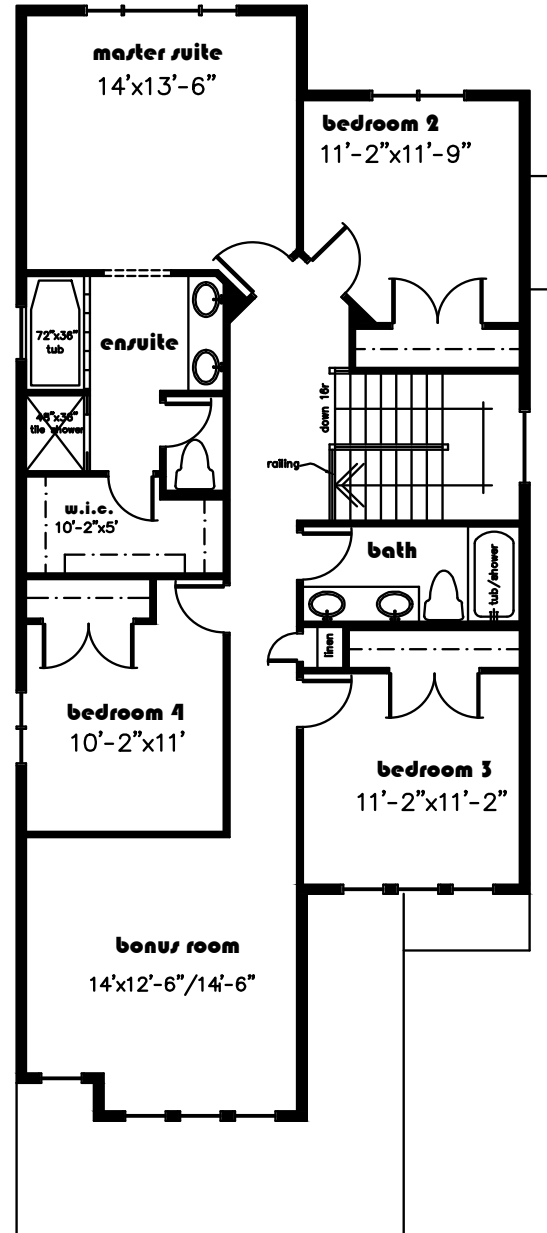




BRADFORD 2372 sq. ft.



main floor
1084 s.f.



second floor
1288 s.f.

Floor plans & dimensions shown are approximate and subject to change without notice. Brochure cannot be used for construction.

www.blackstonehomes.ca
780-298-2100

