



*Better Homes! Better Prices!*



## Manchester II

3 Beds, Den, 3.5 Baths

2,386 Sq. Ft.

### **IT FEATURES**

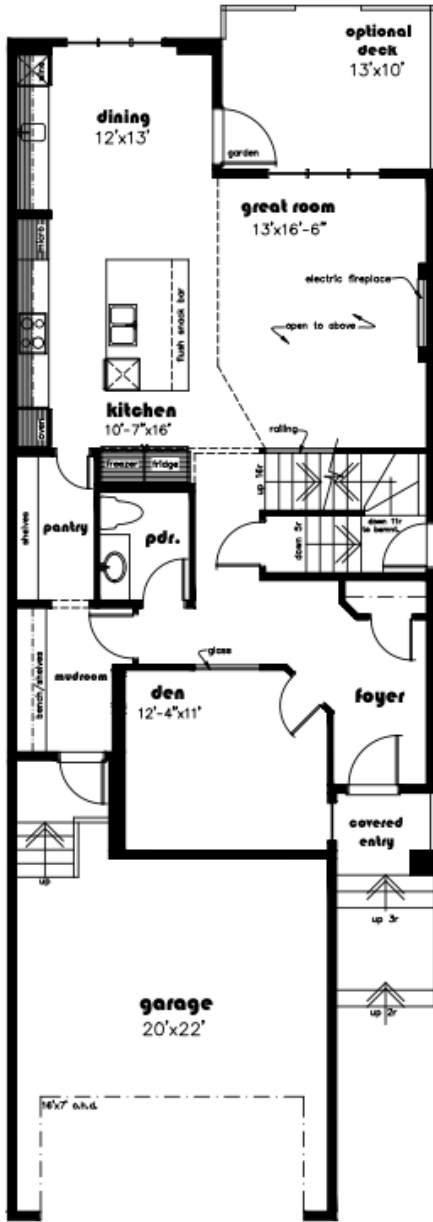
Main Floor Den with Optional Glass Insert  
Spacious Great Room with 18' High Ceilings  
9' Ceilings on the Main Floor & Basement  
Each Bedroom Features an Attached Bathroom  
Mudroom with Built-in Bench & MDF Shelving  
Chef's Dream Kitchen with Ample Cabinet Space,  
Spice Racks, Large Island & Walk-In Pantry  
Luxurious Master Suite with Walk-In Closet &  
Optional Vaulted Ceiling  
2nd Floor Laundry Room with Sink and Cabinetry  
Optional Wet Bar in Dining Nook

[www.blackstonehomes.ca](http://www.blackstonehomes.ca)

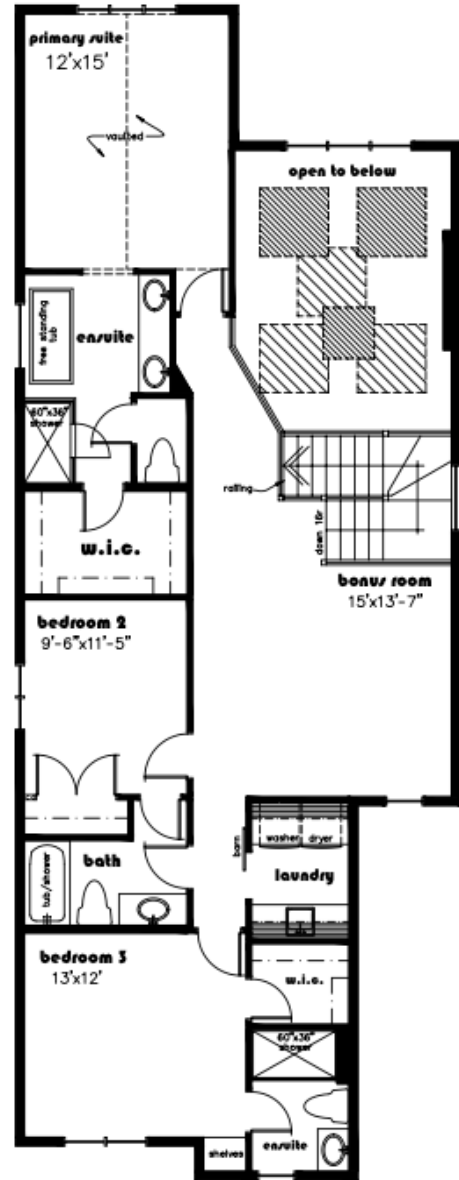


# Manchester II

## 2,386 Sq. Ft.



**main floor**  
**1135**



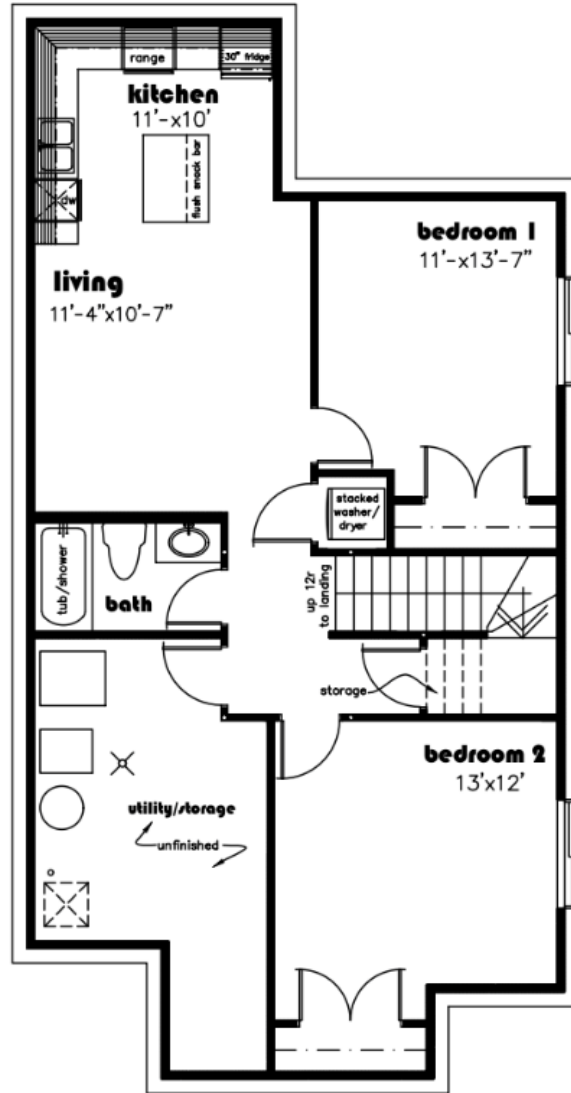
**second floor**  
**1251**

Floor plans & dimensions shown are approximate and subject to change without notice. Brochure cannot be used for construction.



# Manchester II

## Basement Suite - 857 Sq. Ft.



### basement suite

# 857

Floor plans & dimensions shown are approximate and subject to change without notice. Brochure cannot be used for construction.